



Client:	Protide Health
Accession #:	2605010047
Search Code:	Prot2605010047
Received:	05/01/2026
Reported:	05/03/2026
Lot:	PH-KO80-0309

Sample Summary

Product:	KLOW 80mg	Purity:	Vial 1: 99.81% Vial 2: 99.84%
Identity:	Confirmed	Net Content:	Vial 1: GHK-Cu – 57.29 mg KPV – 13.44 mg BPC-157 – 13.55 mg Thymosin Beta-4 – 12.24 mg
Appearance:	Blue Lyophilized Powder		Vial 2: GHK-Cu – 55.34 mg KPV – 13.15 mg

Analytical Results

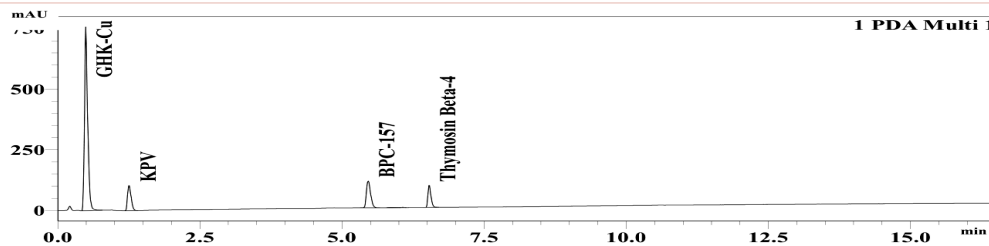
Test	Result
Identity (LC-MS)	GHK-Cu/KPV/BPC-157/Thymosin Beta-4
Purity (HPLC-UV)	99.83%
Net Content Average	GHK-Cu - 56.31 mg KPV - 13.29 mg BPC-157 - 13.31 mg Thymosin Beta-4 - 12.06 mg

Method: Endotoxin testing performed using Limulus Amebocyte Lysate assay in accordance with USP <85> under validated laboratory conditions.

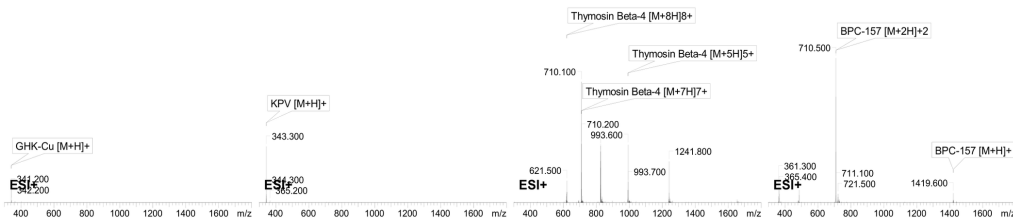
Endotoxin Replicate 1:	Pass	Assay Sensitivity: ≤0.05 EU/mL
Endotoxin Replicate 2:	Pass	Assay Sensitivity: ≤0.05 EU/mL

Method: HPLC with UV detection coupled with mass spectrometry (LC-MS).

Chromatogram



Mass Confirmation



Alex Johnson

Principal Chemist

FreedomDiagnosticsTesting.com

Admin@FreedomDiagnostics.net

Proudly Owned and Operated in the USA