



| | |
|---------------------|----------------|
| Client: | Protide Health |
| Accession #: | 2606100164 |
| Search Code: | Prot2606100164 |
| Received: | 06/10/2026 |
| Reported: | 06/12/2026 |
| Lot: | PH-ki10-0316 |

Sample Summary

| | | | |
|--------------------|--------------------------|---------------------|--------------------------------------|
| Product: | Kisspeptin 10mg | Purity: | Vial 1: 99.88% Vial 2: 99.90% |
| Identity: | Confirmed | Net Content: | Vial 1: 12.77 mg Vial 2: 11.85 mg |
| Appearance: | White Lyophilized Powder | | |

Analytical Results

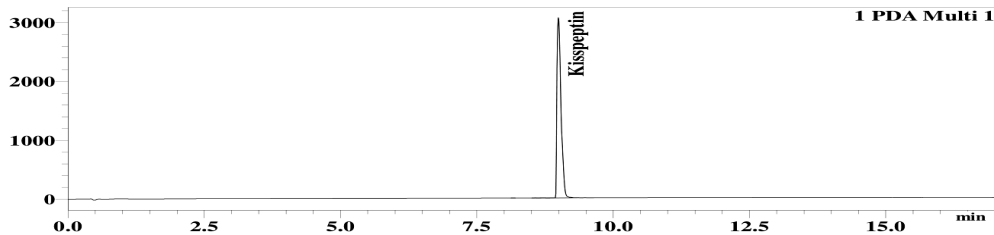
| Test | Result |
|----------------------------|------------|
| Identity (LC-MS) | Kisspeptin |
| Purity (HPLC-UV) | 99.89% |
| Net Content Average | 12.31 mg |

Method: Endotoxin testing performed using Limulus Amebocyte Lysate assay in accordance with USP <85> under validated laboratory conditions.

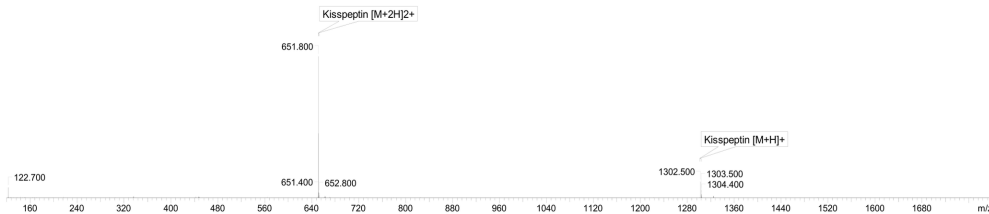
| | | |
|-------------------------------|------|--------------------------------|
| Endotoxin Replicate 1: | Pass | Assay Sensitivity: ≤0.05 EU/mL |
| Endotoxin Replicate 2: | Pass | Assay Sensitivity: ≤0.05 EU/mL |

Method: HPLC with UV detection coupled with mass spectrometry (LC-MS).

Chromatogram



Mass Confirmation




Principal Chemist

FreedomDiagnosticsTesting.com
Admin@FreedomDiagnostics.net
Proudly Owned and Operated in the USA

